



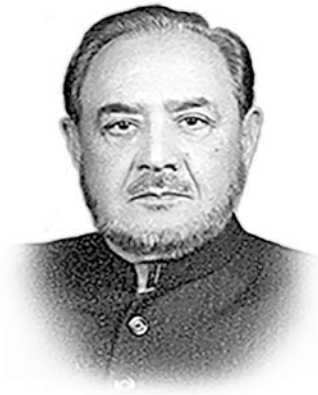
ISLAMIC INTERNATIONAL
MEDICAL COLLEGE
ISLAMIC INTERNATIONAL
DENTAL COLLEGE



Prospectus

FACULTY OF
HEALTH & MEDICAL SCIENCES

Faculty of
**Health &
Medical
Sciences**



The Founder

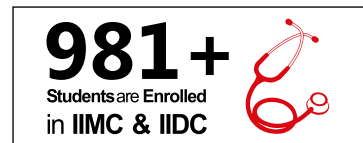
Late Maj. Gen. Muhammad Zulfiqar Ali Khan TI (M), TBT (R)

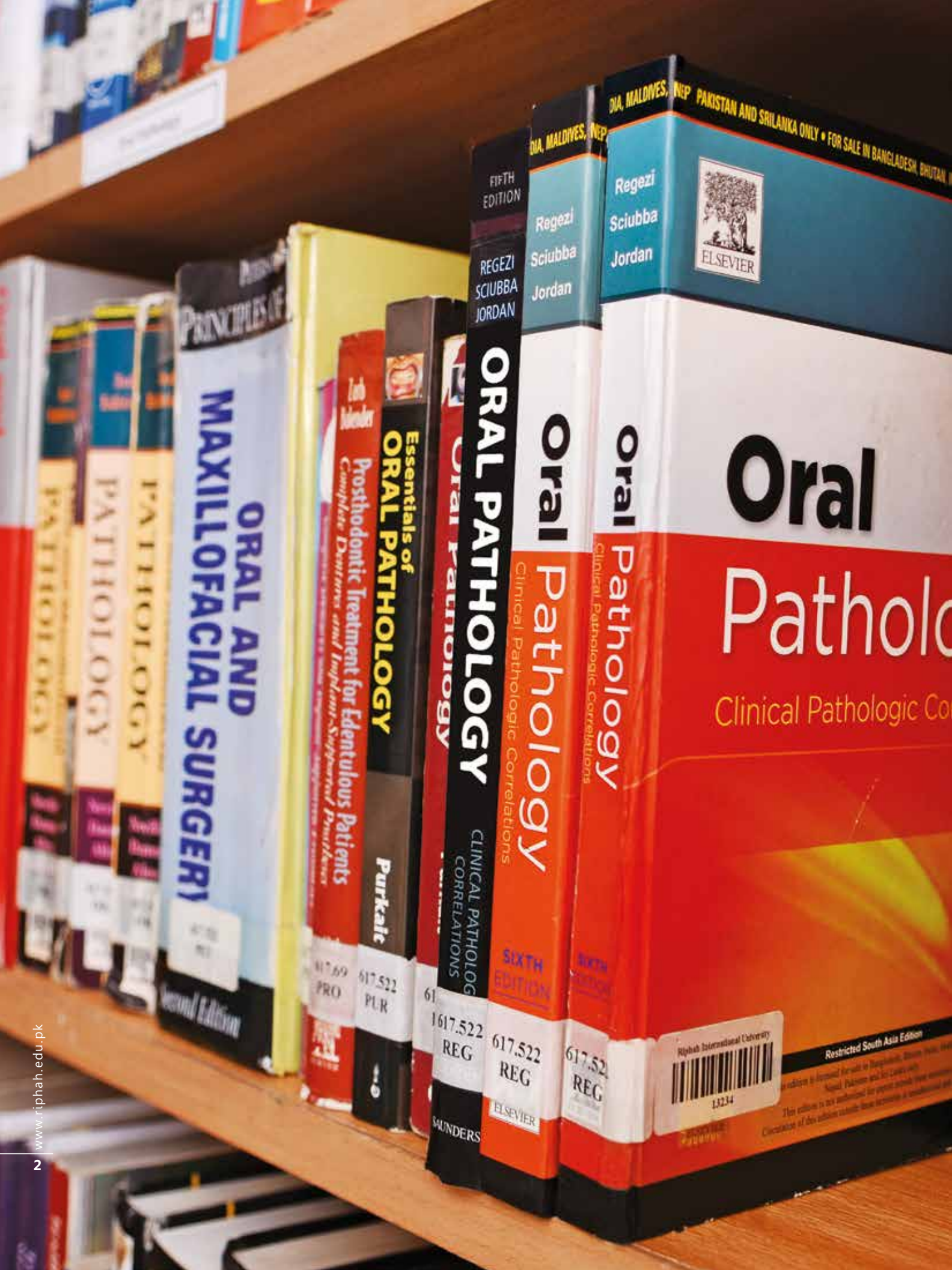
An internationally renowned Cardiologist and a medical personality of unquestionable integrity with exceptional caliber. He was founding Chairman of the Islamic International Medical College Trust, a not for profit educational trust established in 1995. He has to his credit the establishment and smooth running of Armed Forces Institute of Cardiology (AFIC) / National Institute of Heart Diseases (NIHD), Islamic International Medical College Trust, Hearts International Hospital and Pakistan National Heart Association (PANA).

These Institutions are living tribute to his professional capabilities and administrative skills. His invaluable services for the people of Pakistan, for Armed Forces of Pakistan and for mankind as a whole, particularly in health and education sector, will serve as Beacon of Light for the coming generation.

Vision

To be a premier institute in training & grooming doctors of impeccable professional ability with exacting standards of moral & ethical values, who exercise excellence in providing healthcare & practicing medical sciences and are acclaimed nationally as well as internationally.





PRINCIPLES OF
**ORAL AND
MAXILLOFACIAL SURGERY**
Second Edition

**Essentials of
ORAL PATHOLOGY**
Purkait
617.69 PRO
617.522 PUR

FIFTH EDITION
REGEZI
SCIUBBA
JORDAN
ORAL PATHOLOGY
CLINICAL PATHOLOGIC
CORRELATIONS
617.522 REG
ELSEVIER

DIA, MALDIVES, NEP
REGEZI
SCIUBBA
JORDAN
Oral Pathology
Clinical Pathologic Correlations
SIXTH EDITION
617.522 REG
ELSEVIER

DIA, MALDIVES, NEP PAKISTAN AND SRILANKA ONLY • FOR SALE IN BANGLADESH, BHUTAN, INDIA, MALDIVES, NEP
REGEZI
SCIUBBA
JORDAN
Oral Pathology
Clinical Pathologic Correlations
SIXTH EDITION
617.522 REG
Riphah International University
13234
Restricted South Asia Edition
This edition is not authorized for export outside these territories.

Contents

Islamic International Medical College	5
• Bachelor of Medicine and Bachelor of Surgery (MBBS)	8
• Glimpses of Curricular and Extracurricular Activities	13
• MSc Pain Medicine	14
• Master of Health Professions Education (MHPE)	16
• Diploma In Anesthesiology	18
• M. Phil Programs	19
• PhD Programs	24
• FCPS Part-II Training	28
• Faculty of Medical College	29
Islamic International Dental College	34
• Bachelors of Dental Surgery (BDS)	36
• MDS Orthodontics	38
• MDS Operative Dentistry	41
• M. Phil Dental Materials	44
• FCPS Part-II Training	45
• Faculty of Dental College	46
Teaching Hospitals	49
Dress Code	54
Location Map (IIMC & IIDC)	





Years of
Excellence
in imparting
Medical Education

ISLAMIC INTERNATIONAL MEDICAL COLLEGE (IIMC)

Islamic International Medical College (IIMC) is pioneer private sector Medical Institute in Northern Pakistan and was established in 1996. IIMC functions as a subsidiary of Islamic International Medical College Trust (IIMC-T) which espouses

“Establishment of State-of-the-Art Educational Institutions with a focus on inculcating Islamic Ethical Values”.

National and International Accreditation:

The College is affiliated with Riphah International University, Islamabad and is recognized by the Pakistan Medical & Dental Council (PM & DC). IIMC is also listed in the WHO directory of accredited medical schools and universities, International Medical Education Directory, USA (IMED), International Institute of Medical Education, USA (IIME) and Foundation for Advancement of International Medical Education and Research (FAIMER).

Sixteen batches of MBBS students have already graduated and are registered with PM & DC. They are taken as valuable addition to coterie of medical professionals both nationally as well as internationally.

Programs

IIMC offers five years basic and clinical training leading to Bachelors in Medicine & Bachelors of Surgery (MBBS). It also offers M. Phil in Anatomy, Physiology, Biochemistry, Pharmacology, Histopathology, Chemical Pathology, Hematology, Molecular Biology, Microbiology, MSc Pain Medicine, Diploma in Anesthesiology, MHPE (Master of Health Profession Education), PhD, and Training in Medicine, Surgery, Gynecology & Obstetrics, Pediatrics, Anesthesia, and Physiology for FCPS Part-II is recognized by College of Physicians and Surgeons of Pakistan.



Maj Gen (R) Prof. Masood Anwar

Dean FH&MS

HI(M), B.Sc. MBBS, MCPS (Clin Path), FCPS (Path)

Maj Gen (R) Prof. Masood Anwar, HI(M) B.Sc. MBBS, MCPS (Clin Path), FCPS (Path) has served as Professor of Pathology (Hematology) in Armed Forces Institute of Pathology and Army Medical College for 13 years.

He established Armed Forces Bone Marrow Transplant Centre which is first of its kind, in public sector in Pakistan. He is former Commandant Armed Forces Bone Marrow Transplant Centre, Commandant Armed Forces Institute of Pathology and Principal of Army Medical College. He has also served as Executive Director of National Institute of Health, Islamabad. He has been conferred Fellowship of Pakistan Academy of Medical Sciences and College of Pathologists Pakistan. He has been President Pakistan Association of Pathologists, Pakistan Society of Hematology and Vice President Pakistan Thalassemia Welfare Association. He is also member of Council of College of Pathologists Pakistan. He has more than 20 years experience of teaching both undergraduate and postgraduate medical students. He has more than 200 research publications to his credit and has contributed in several books. He has lead successfully the team who designed and implemented World Federation for Medical Education (WFME) compliant Integrated Medical curriculum at Islamic International Medical College.

**Lt. Gen. (Retd) Prof. Dr. Azhar Rashid**

Principal, IIMC

HI(M), MBBS, AFGMI, FCPS (Surgery), M.Sc

Lieutenant General (Retd) Prof. Dr. Azhar Rashid HI (M), MBBS (KEMC), Diploma Surgery (AFPGMI), FCPS Surgery (CPSP), M.Sc. Defence & Strategic Studies (National Defence University), is an eminent Cardiac Surgeon, who after joining Army rose to become Surgeon General/Director General Medical Services of Pakistan Armed Forces. He graduated from King Edward Medical College in 1979 and on joining the Armed Forces did Diploma in Surgery in 1980. After his initial training he did FCPS in Surgery in 1986 and after that he got advanced training in Cardiac Surgery at Saint Thomas and Guys Hospital, London UK from 1988-1990.

In his academic pursuits at AFIC/NIHD, he rose from Registrar to Professor in Cardiac Surgery, and has authored more than "30" articles in national and international journals. He has been member and later secretary of faculty of Cardiac Surgery at College of Physicians & Surgeons Pakistan (CPSP) from 1998 till 2005. He also supervised post graduate training of several Cardiac Surgery trainees.

He was Commandant & Executive Director at AFIC/NIHD 2006 to 2008. In 2009 after successfully completion of his M.Sc in Defence & Strategic Studies from National Defence University, he was appointed as Director General Surgery till 2011 and then Surgeon General / Director General Medical Services the ultimate position in Armed Forces Medical Corps a position in which he served till May 2015. He was awarded Hilal-i-Imtiaz (Military) in recognition of his meritorious services and the illustrious military career.

BACHELOR OF MEDICINE & BACHELOR OF SURGERY (MBBS)

Introduction

Globally healthcare education have been modified and improved over the years. These changes are results of feedback from medical practitioners, staff and students. In IIMC Bachelor of Medicine and Bachelor of Surgery (MBBS) program is an innovative tailored curriculum, purposefully designed to meet the healthcare needs of Pakistan. It is recognized from Pakistan Medical and Dental Council (PM&DC) and extensively accredited by many International medical certification bodies. The quality of our integrated modular system matches the best offered MBBS anywhere in the world.

The program was started in 1996. It is a pioneering degree program integrated with multi-disciplinary clinical trainings which not only allow you to achieve solid scientific understanding, about medicine but also provide you the perfect opportunity to practice appropriate clinical skills and become ultimate leader of your field. The curriculum is taught by our highly qualified expert faculty. The sixteen batches have already been graduated and providing their services in national and global health care industry and many more are yet to go.

Integrated Modular System

IIMC takes pride in selection by PM&DC for implementing integrated curriculum in MBBS program. Integrated system curriculum is divided into modules. Each module comprises of a specific body system. The curriculum content is spread over two spirals. The first spiral 2 years duration comprises of 13 modules in which 70% content is from basic sciences and 30% from clinical sciences. The second spiral 1½ years duration again comprises of 13 modules but 70% content is of clinical sciences and 30% is of basic sciences. The last 1½ years comprises structured clinical clerkship in various clinical departments, where students are encouraged to undertake hands on practical experience under supervision of experienced faculty.

Teaching Methodology

Teaching sessions are student centered. Faculty member is present to correct the mistakes and to add if students have missed something. Faculty prepares and uploads necessary teaching material on "Moellim", University web based teaching program. This is done before the session starts and is available to students even at home.

The teaching/learning methods/strategies used to promote better understanding are: Interactive lectures, Small group discussions (SGD), Skill Lab, Tutorials, Problem based learning (Discussing Problem which is near to real life situation), Computer assisted learning program, Facilities of Moellim and Self Study Lectures in the College. In this process the learners are encouraged to consult various learning resources and not only the text books. Beside this early patient contact and clinical reasoning are incorporated to develop high levels of clinical skills and medical knowledge.



Eligibility Criteria:

The candidate should have passed the intermediate science (FSc) examination (medical group) securing at least 60% marks in aggregate, unadjusted, from a Pakistani university or an equivalent examination of a board of secondary education in Pakistan.

OR

Any other examination of a foreign university or examining body (A levels etc.) which in scope and standard is found equivalent to the intermediate science F.Sc (Pre Medical Group) examination (medical group) of a Pakistani university or board of secondary education. Such candidates will have to furnish, along with their application, an equivalence certificate from the inter-board chairman of committee (IBCC). However, equivalence certificates of such applicants will not be accepted who have not studied physics, chemistry, biology and English in 11th and 12th grade.

OR

The candidate should have passed a higher examination of a Pakistani university with biological sciences (BSc) after FSc in medical group, securing 60% marks (in both degrees) in aggregate, unadjusted, from a Pakistani university or an equivalent examination.

Admission for expatriates / International Students

Pakistani nationals living abroad who meet the eligibility criteria mentioned above are eligible to take the entry test. If they do not take the entry test, they can alternatively take the SAT II test with minimum score of 550.

If the medium of instruction in that country is other than English, they will also have to take TOEFL with a minimum score of 500 or IELTS with a minimum score of 5.5.

They are eligible for both open merit seats and the reserved seats for expatriates. However entry test is mandatory for admission on open merit seat.

Note: For International students (Non Pakistanis) more documentation shall be required which is provided on our website. www.riphah.edu.pk

Duration:

5 years

Available Seats:

The seats available are as follows:

Open Merit	83 seats
Foreign / Expatriate	10 seats

Below mentioned seats will be awarded as per UHS & PMDC rules

Pakistan Railway Employees	05 seats
Al-Mizan Foundation	01 seats
IIMCT/RIU Employees' Children	01 seats
Total	100 seats

Selection Criteria:

Matric or Equivalent	10%
Intermediate or Equivalent	40%
Provincial Govt. Entry Test	50%

Class Timings:

Monday to Friday

(8:00 am to 3:00 pm)

College Location:

Al-Mizan Campus, Rawalpindi

Affiliated Hospitals:

Pakistan Railway General Hospital
Westridge, Rawalpindi

Riphah International Hospital
Sihala, Zone V, Islamabad

Hearts International Hospital
Near PC Hotel, on the Mall, Rawalpindi

Admission Policy

The admission policy is subject to the guidelines provided by PM&DC or Ministry of Health from time to time.

Research

IIMC provides a rich environment for cutting edge research in Basic Medical Sciences, Clinical Specialties, Medical Education and Cross Disciplinary research with Bio-Medical Engineering, Information Technology, Rehabilitation and Pharmaceuticals. The research Journal of IIMC provides yet another platform for exploring new horizons in basic and clinical subjects.

IIMC has state-of-the-art research labs and equipment for observation and practical research work at both undergraduate and postgraduate level. Beside this more than **100,000** e-books and **2,500** journals in the field of medical education are available on our information portal.



Multidisciplinary Lab



Anatomy Museum



Forensic Lab



Community Medicine Museum

Conferences

IIMC has organized four international conferences in the field of health and medical sciences at home and abroad to promote innovations in curriculum and development of new methodologies. They are also meant to modernize knowledge and publicize latest advances as discovered from subject experts and to help bridge the gap between the developed and developing nations. These conferences bring together individuals and organizations/ institutions involved in medical and health professions education to share experiences and challenges.

International Conference on Medical Education (ICME) was launched by Riphah International University in 2009 to provide a credible platform for interaction of world renowned experts in Health Profession Education and those from developing countries aspiring to reform Health Profession Education in their countries to bring it at par with international standards. The first conference was held in Pakistan which resulted in recognition of Health Profession Education as a specialty in Medical Sciences and the compulsory establishment of Department of Medical Education in all medical colleges. Encouraged by the response ICME was then organized in other countries undergoing or planning for reforms in Health Profession Education.

ICME has so far been organized biennially in Abu Dhabi, Mauritius and Istanbul (Turkey).

- First ICME 2009, organized by Riphah International University, was held in Islamabad.
- Second ICME 2010 was held in Abu Dhabi
- Third ICME 2013 was held in Mauritius.
- Fourth ICME 2015 was held in Istanbul, Turkey.
- Fifth ICME will be held from 10-14 March 2018 at Abu Dhabi National Exhibition Center, Abu Dhabi, UAE.



ICME 2018, Abu Dhabi



ICME 2015, Isanbul, Turkey



ICME 2013, Mauritius



ICME 2010, Abu Dhabi



ICME 2009, Islamabad

Student Counseling Cell

Another outstanding feature of Islamic International Medical College (IIMC) is that it provides comprehensive counseling services in order to help the medical students to better deal with their emotional, psychological, behavioral, and academic problems. The Student Counseling Cell of IIMC caters the psychological needs of the students and assists them to resolve intrapersonal and interpersonal difficulties, acquire skills to cope with everyday life problems and challenges, effectively deal with learning difficulties, and facilitate optimal self-growth. Psychometric assessment and counseling services are intended to explore and treat emotional, behavioral, interpersonal, psychological and academic issues of students. Islamic International Medical College is pioneer and a leading institution which is catering for the mental health of the students, employees, faculty and their dependents.



Extra Curricular Activities

Extracurricular activities plays an important role in adolescent lives and futures. Exposure to diverse groups can help promote adolescents to become socially intelligent and responsible adults. IIMC provide a wonderful platform to its students to acquire these traits of social responsibility and leadership skills by joining number of student societies during their studies.

- IIMC Art and Craft Society
- IIMC Debating Society
- IIMC Scientific Society
- ISSWA
- Riphah Peace Fort
- IIMC Sport Society
- IIMC Talents Exhibition Society
- IIMC Undergraduate Research Forum



Glimpses of IIMC Life



M.SC PAIN MEDICINE

With ever growing needs of patients towards different treatment modalities, Pain Management is now recognized as a multidisciplinary field. This multidisciplinary common field is shared by Pain Management specialists, anaesthesiologists, acupuncturists, physiotherapists, surgeons, neurosurgeons, psychiatrists, medical specialists and members from the faculties of basic medical sciences.

Our Program:

- Provides graduates with the informed and evidence-based ability and skills to manage pain in a variety of settings.
- Is designed to encourage multidisciplinary learning.
- Will equip students with the knowledge and skills to manage pain more effectively.

Eligibility Criteria:

- MBBS or equivalent qualification recognized by PM&DC.
- Anaesthesiologist (MCPS / FCPS) or those with 3 years experience in anaesthesiology will be given preference.
- FCPS in other specialties (Medical and Surgical Allied).
- Candidate shall have to appear in university based entry test.

MSc PAIN MEDICINE MODULES

There will be four modules in pain medicine program. Summative assessment will be done after each module. Trainee has to pass each module to appear in final exam.

- a. Basics of Pain Medicine, Pharmacological and non-pharmacological management
- b. Musculoskeletal and rheumatologic pain condition
- c. Nerve blocks and neuroablative procedure
- d. Education and Scientific Enquiry (Dissertation writing)

Where and How to Apply

An application material containing application form, prospectus and the necessary information, can be obtained from admission office of Islamic International Medical College (IIMC), Rawalpindi.

ACADEMIC SYSTEM

I. Structure and Duration

- 1) The requirements for the Program shall comprise coursework and thesis. The Program requirements of each Department shall comprise coursework requirement of at least 50 credit hours.
- 2) All the candidates shall follow the syllabi and courses prescribed by the RIU from time to time that are obtainable from RIU or PGRTC on payment.



II. Student Evaluation

A candidate shall be allowed to appear in the examination if he/she has been on the rolls during the semester, has registered himself/ herself for the courses of study with the RIU; and has attended prescribed lectures and laboratory work and completed the coursework to the satisfaction of the Department duly recorded on log book.

III. Teaching & Methodology.

- Teaching of various courses shall be conducted in the University Departments or the affiliated institutions through lectures, tutorials, discussions, seminars, fieldwork and /or other methods of instructions.
- The teaching shall be in accordance with the coursework prescribed by the Dean, PGRTC, IIMC from time to time.
- As part of advanced studies, RIU will rotate the candidate to other training institutes as advised by the supervisor.

IV. Biannual Progress Report

The Supervisor of MSc student shall submit a detailed progress report after every six months for the consideration of the Advanced Studies and Research Board. In case of two consecutive adverse reports, the Board may cancel the registration of the candidate. The University is authorized to cancel the registration due to poor performance of the candidate at any time of the course.

V. Thesis / Dissertation

- Each candidate shall submit a thesis dealing with concerned speciality or any of its branches. It shall be submitted to the Controller of Examinations on the date fixed for the purpose.
- The thesis must be type written on paper 11" x 8 1/2" with margin of 1 1/2" at each side. Only one side of the paper is to be typed. It shall be bound in cloth/raxine with the name of the author and title on the side cover.
- A student must register for the thesis by the end of the first semester.
- The candidate is required to attend and present at least two seminars on his/her research work during the course of his/her study.

VI. Course Work / Total Credits For Graduation

The course will comprise four semesters of six months each. There shall be an assessment examination comprising written and viva voce, at the end of each semester. A candidate will be required to complete at least 50 credits before appearing for the final assessment at the end of two years. At least 25 of these credits will be completed in first year. The distribution of credits will be as under:

S.No	Activity	Credits
1.	Dissertation	08
2.	Lectures	1 per 5
3.	Lectures	1 per 5
4.	Original research paper published	2 per paper
5.	Case report published	2 per report
6.	Paper Presented in a National Pain Conference	2 per paper
7.	Paper Presented in a Regional Pain Conference	1 per paper
8.	Presentation in a Clinical Meeting	1 per paper
9.	Pain Camps /Workshop	2 Per Camp

The candidate shall get the topic and the protocol approved at any time after three months of start of course. The completed dissertation shall be submitted six months before the final assessment and approval shall be a prerequisite to appear in the examination . The candidate is required to keep a log book of all the activities in which he or she participate during the course. The lectures on physiology, pharmacology and anatomy of pain shall be attended in the relevant departments of a recognized medical college and the fact shall be endorsed in the log book authenticated by the lecturer and the head of the respective department. The topics to be covered are listed below. The interventional procedures in pain medicine shall be completed in pain clinics/ centres recognized by the university. The record of these procedures shall be kept in the log book and should be authenticated by the respective supervisors or heads of department.

MASTER OF HEALTH PROFESSIONS EDUCATION (MHPE)

The purpose of the Master of Health Professions Education (MHPE) program is to produce effective leaders and scholars in health professions education, who can manage the change & bring reform in medical education at national level and effectively to direct the future health care delivery systems. The Masters of Health Professions Education (MHPE) provides an educational research foundation for teaching, assessment and leadership in health professions education.

The MHPE curriculum comprises of twelve courses which focus on the application of learning principles to educational practice.

The post-graduation in Health Professions Education is a credential for educational leadership.

It is a two years, 04 semester's 32 credit hours program. Masters in HPE will be awarded on successful completion of 12 Courses (Basic & Advance Level) in semester # 03 and submission of quality Thesis / Dissertation.

Eligibility Criteria:

- All Health Professionals with a bachelor's degree (minimum 16 yrs of education).
- Minimum basic qualification: MBBS, BDS, DPT, D-Pharmacy and B.Sc Nursing Portfolios.
- Interview, will be taken by the admission committee.
- Be fluent in English as judged in interview.
- Be conversant in using computer and Internet.
- Candidate shall have to appear in university based entry test.



COURSES

Semester-I

S. No	Code	Course Name	Duration	Credit Hour
1.	MHTL7113	Introduction to Health Professions Education and Teaching & Learning	2 Months	03
2.	MHCR7122	Basic principles of Curriculum planning & designing	1 month	02
3.	MHLE7132	Learning and Educational Psychology	1 month	02
4.	MHAS7141	Basic principles of Assessment planning & designing	1month	01
Total				08

Semester-II

S. No	Code	Course Name	Duration	Credit Hour
1.	MHCR7212	Curriculum: Development & implementation	1 month	02
2.	MHAS7222	Assessment of and for learning: Principles, theories, planning & designing	1 month	02
3.	MHPE7232	Program Evaluation: Planning, designing and implementation in Health Professions Education	2 month	02
4.	MHPET7242	Professional Ethics	1month	02
Total				08

Semester-III

S. No	Code	Course Name	Duration	Credit Hour
1.	MHSI7312	Scholarship and innovation in HPE, Research proposal writing	1 month	02
2.	MHRS7323	Research Essential Skills in Health Professions Education	2 month	03
3.	MHEL7332	Educational Leadership, Management, and Professionalism	1 month	02
4.	MHQM7341	Quality Management in Health professions Education	1 month	01
Total				08

Semester-IV

S. No	Course Name	Duration	Credit Hour
1.	Thesis/Dissertation Writing & Checking and Defense of thesis	6 months	08
Total			08

Total Credit hours = 32

DIPLOMA IN ANESTHESIOLOGY (D.A)

Riphah International University Islamabad has started a curriculum and training of the Diploma in Anaesthesia (DA), and is designed at its postgraduate level, considering the national and international needs of anaesthetist in the country especially at DHQ THQ levels. These trained doctors will be able to provide improved healthcare facilities at the primary and secondary healthcare levels.

Objectives

At the end of training for D.A a candidate shall be able to provide improved healthcare at the level of a primary and secondary care hospitals.

A candidate shall be able to:

- Provide safe anaesthesia to the patients.
- Recognize and manage emergencies during anaesthesia and surgery.
- To provide improve healthcare facilities at the level of primary and secondary care hospitals.

Eligibility Criteria:

1. MBBS or equivalent degree from a recognized college.
2. One year house job in recognized institution.

OR

Practical experience of working in anaesthesia department of a teaching hospital, as medical officer for not less than one year, in lieu of above.

OR

Pre-PG training in anaesthesiology, at the department of anaesthesiology RIU, or affiliated medical colleges, for a period of one year.

1. Registration for DA under RIU.
2. Valid registration with Pakistan Medical & Dental council.

Note: Candidates who had completed two years training in Anaesthesia recognized institute can sit in DA final examination (e.g. graded specialist of Army).

Course

- i. The whole course will comprise of two parts viz. Part I and Part II.
- ii. The Part I will consist of basic sciences viz. anatomy, physiology, biochemistry, pharmacology, physics, clinical measurements, statistics, resuscitation and equipment.
- iii. The Part II will consist of clinical anaesthesiology, intensive care, pain management and related aspects of internal medicine and general surgery.
- iv. During the entire period of training, in addition to receiving instructions in theory and practical from the relevant faculties of the RIU, the postgraduate student will be required to work, full time, in the department of anaesthesiology & intensive care at the Railway General & Teaching Hospital Rawalpindi to get the practical training in anaesthesia and will have to follow the schedule of teaching and training given by the department from time to time.
- v. The postgraduate students will be required to attend a minimum of 75% of all the lectures, tutorials and practicals individually.
- vi. The syllabus and the curriculum will be determined by the board of studies and approved by the Board of Studies & Academic Council of the university.

Examinations

The examinations of Part I and Part II will be held once a year in the month of January.

Note: Detail information is available on website.



M. PHIL (MASTER OF PHILOSOPHY)

IIMC is recognized by Pakistan Medical and Dental Council (PM&DC) to offer following M. Phil courses in:

- Anatomy
- Physiology
- Biochemistry
- Pharmacology
- Histopathology
- Chemical Pathology
- Hematology
- Molecular Biology
- Microbiology

Eligibility Criteria:

- MBBS or equivalent as recognized by PM&DC.
- Fully registered with PM&DC.
- Must have MBBS examinations with minimum aggregate 60% marks.
- Candidate shall have to appear in university based entry test.
- Must satisfy Selection Board of the IIMC for Postgraduate studies/training.

Duration

- M.Phil Programs are of two years with four semesters, i.e total 32 credit hours. Each semester is of eight credit hours.
- Three semesters for course work and one semester for research and thesis.

M.Phil Anatomy

Scheme of Study

Semester-I

S.No	Code	Subject	Credit hours
1.	MPAN-7114	General anatomy General histology General embryology	04
2.	MPME-7112	Medical Education	02
3.	MPBS-7112	Biostatistics	02
		Total	08

Semester-II

S.No	Code	Subject	Credit hours
1.	MPAN-7224	Special Histology	04
2.	MPAN-7234	Gross anatomy, upper limb, lower limb, abdomen & thorax, perineum, Head & neck	04
		Total	08

Semester-III

S.No	Code	Subject	Credit hours
1.	MPAN-7344	Special Embryology	04
2.	MPAN-7354	Neuroanatomy	04
		Total	08

Semester-IV

S.No	Code	Subject	Credit hours
1.		Research	08

Total Credit hours = 32

M.Phil Physiology

Scheme of Study

Semester I

Code	Subject	Course Description	Cr. Hours
MPME7112	Medical Education	Educational Environment, Teaching & Learning Curriculum Development & Planning, Assessment, Program Evaluation	02
MPBS7112	Biostats & Research Meth	Medical Writing, Statistical Methods @ Library Sciences	02
MPPH7114	Physiology	Gen. Physio, Cell Biology, Transport Mechanisms, Blood and Musculoskeletal	04
Total			08

Semester-II

Code	Subject	Course Description	Cr. Hours
MPPH7224	Physiology	Respiration, Cardiovascular System	04
MPPH7234	Physiology	Body Fluid & Renal System, Digestive System, GIT	04
Total			08

Semester-III

Code	Subject	Course Description	Cr. Hours
MPPH7344	Physiology	Central Nervous System & Special Senses, Exercise Physiology, Fluid and Electrolyte Balance	04
MPPH7354	Physiology	Endocrinology, Reproduction, Fetal Physiology, Energy and Metabolism	04
Total			08

Semester-IV

Code	Subject	Course Description	Cr. Hours
	Physiology	Research	08

Total credit hours = 32

M.Phil Biochemistry

Scheme of Study

Semester-I

S.No	Code	Subject	Credit hours
1.	MPBC-7112	Biostatistics & Research Methodology	2
2.	MPBC-7112	Medical Education	2
3.	MPBC-7114	Chemistries, Enzymology, Nutrition	4
Total			08

Semester-II

S.No	Code	Subject	Credit hours
1.	MPBC-7224	Metabolisms	4
2.	MPBC-7234	Oxidative Phosphorylation, Acid Base, Hemoglobin	4
Total			08

Semester-III

S.No	Code	Subject	Credit hours
1.	MPBC-7344	Molecular Biology	4
2.	MPBC-7354	Endocrinology & Clinical Biochemistry	4
Total			08

Semester-IV

S.No	Code	Subject	Credit hours
1.	Thesis	M.Phil Thesis & Research	8

Total Credit Hours: 32

M.Phil Pharmacology

Scheme of Study

Semester-I

Code	Subject	Course Description	Cr. Horse
MPPR7116	Pharmacology-I	General Pharmacology (Pharmacokinetics, Pharmacodynamics & Special Pharmacology (ANS, Respiratory System, CNS, Psychotropic, Alcohol, Pain & Anesthesia, GIT CVS, Diuretics, Ocular Pharmacology, Blood)	06
MPPR 7226	Pharmacology-II	Pharmacodynamics Practical, CVS CNS, Eye, GIT and VIVA Exam	06
		Total	08

Semester-II

Code	Subject	Course Description	Cr. Horse
MPME 7112	Medical Education	Education of Environment Teaching & learning Curriculum Development & Planning, Assessment, Program Evaluation.	02
MPBS 7112	Bio statistics & Research Methodology	Medical Writing, Statistical Methods & Library sciences	02
		Total	08

Semester-III

Code	Subject	Course Description	Cr. Horse
MPPR 7334	Pharmacology-III	Drug Action on smooth muscle, inflammation & Gout, Endocrinology	04
MPPR 7344	Pharmacology-IV	Repro & Breast, Chemotherapeutic drugs, Rational Prescription writing	04
		Total	08

Semester-IV

Course Code	Cr. Horse
Research work	08

Total credit hours = 32



M.Phil Histopathology

Scheme of Study

Semester-I

S.No	Code	Subject	Credit hours
1.	MPHP-701	Biostatistics & Research Methodology	02
2.	MPHP-702	Medical education	02
3.	MPHP-703	Medical audit & quality control. Gross and Autopsy Molecular genetics & special techniques in surgical pathology	02
4.	MPHP -704	MPHP -704 General Pathology	02
		Total	08

Semester-II

S.No	Code	Subject	Credit hours
1.	MPHP -705	Cytopathology	02
2.	MPHP -706	Diseases of BVS, heart and Respiratory system	02
3.	MPHP -707	Diseases of GIT, pancreas	02
4.	MPHP -708	Hepatobiliary system	02
		Total	08

Semester-III

S.No	Code	Subject	Credit hours
1.	MPHP -709	Diseases of Head & Neck, Lymphoid system, Endocrine and Kidney	02
2.	MPHP -710	Disease of Male, Female genital system & breast	02
3.	MPHP -711	Diseases of Musculoskeletal system & soft tissue	02
4.	MPHP -712	Diseases of skin, CNS and eye	02
		Total	08

Semester-IV

S.No	Code	Subject	Credit hours
1.		Research / Thesis writing	08

Total Credit hours = 32

M.Phil Chemical Pathology

Scheme of Study

Semester-I

Core Course 1: (08 Credit Hours)

- Basic laboratory principles and techniques 04 Credit Hours

Two Compulsory courses

- Biostatistics & Research methodology: 02 Credit Hours
- Medical Education: 02 Credit Hours

Semester-II

Core Course 2 & 3: (08 Credit Hours)

- Pathophysiology & Biochemical Analyses
- Major Biochemical Assay Methods
- Analytical Techniques and Instrumentation

Semester-III

Core Course 4 & 5: (08 Credit Hours)

- Method Evaluation
- Clinical Endocrinology
- Data Interpretation, Principles of QC, Molecular diagnostic and genetics

Semester-IV: (08 Credit Hours)

- Research Work
- Defense of Thesis

Total Credit hours = 32

M.Phil Haematology

Scheme of Study

Compulsory Core Courses

Code	Course Description	Credit hours
HT-703	Disorders of Red Cells	03
HT-704	Basic and Special Laboratory Techniques	02
HT-705	Disorders of Leucocytes (Non-Malignant). The Spleen & Immunoglobins	02
HT-706	Disorders of Hemostasis & Coagulation	02
HT-707	Laboratory methods for the study of Hemostasis Blood Coagulation	02
HT-708	Malignant disorders of Haemopoietic System	03
HT-709	Principles and practice of Transfusion Medicine	03
HT-710	Laboratory Transfusion Services	03
	Total	20

Allied Subjects Courses

Code	Course Description	Credit hours
	Biostatistics & Research Methodology	02
	Medical Education	02
	Total	04

Research Work

Code	Course Description	Credit hours
	Research (M. Phil)	08

Total Credit hours = 32

M.Phil Molecular Biology

Scheme of Study

Semester-I

S.No	Code	Subject	Credit hours
1.	MPMB-7112	Biostatistics & Research Methodology	02
2.	MPMB -7112	Medical Education	02
3.	MPMB -7114	Molecular Biology	04
		Total	08

Semester-III

S.No.	Code	Subject	Credit hours
1.	MPMB -7344	Endocrinology & Clinical Biochemistry	03
2.	MPMB -7354	Trends in Biotechnology	03
3.	MPMB -7354	Molecular Applications	02
		Total	08

Semester-II

S.No	Code	Subject	Credit hours
1.	MPMB -7224	Cellular Biology	04
2.	MPMB -7234	Molecular Biology Techniques	02
3.	MPMB -7234	Enzymes & Vitamins	02
		Total	08

Semester-IV

S.No.	Code	Subject	Credit hours
1.	Thesis	M.Phil Thesis and Research	08

Total Credit Hours: 32

M.Phil Microbiology

Scheme of Study

Semester-I

S.No	Code	Subject	Credit hours
1.	ASC -801	Biostatistics & research methodology	02
2.	ASC – 802	Medical education	02
3.	MIC – 703	Basic Bacteriology	02
4.	MIC – 704	Gen. Bacteriology	02
Total			08

Semester-II

S.No	Code	Subject	Credit hours
1.	MIC - 705	Gram positive bacteria (including anaerobes)	02
2.	MIC - 706	Gram negative bacteria (including anaerobes)	02
3.	MIC - 707	Mycobacteria	02
4.	MIC - 708	Other bacterial pathogens (Chlamydia, Mycoplasma, Rickettsiae)	02
Total			08

Semester-III

S.No	Code	Subject	Credit hours
1.	MIC - 709	Immunology (Immunity, hypersensitivity, antigen, antibody, ELISA)	02
2.	MIC - 710	Virology	02
3.	MIC – 711	Parasitology	02
4.	MIC - 712	Mycology	02
Total			08

Semester-IV

S.No	Code	Subject	Credit hours
1.		Research / Thesis writing	08

Total credit hours = 32



PHD PROGRAMS

Islamic International Medical College offers PhD Program in Medical Sciences. IIMC have state of art research labs in al-mizan campus including Molecular and Genetics labs. Another Hi-Tech research lab is available in Riphah Institute of Pharmaceutical Sciences, Islamabad.

In addition we collaborate with other institutions for research such as Army Medical College, AFIP and ASAB of NUST. Clinical Material for research is collected from our own affiliated hospitals, Military Hospital and Combined Military Hospital. Our PhD students are funded by HEC and other National and International Agencies.

IIMC offers PhD in:

- Pharmacology
- Hematology
- Biochemistry
- Chemical Pathology

PhD (Pharmacology)

Scheme of Study

Semester-I

S.No.	Course	Credit hours
1.	Genetic	02
2.	Medical Education	01
3.	Research Methodology	02
4.	Professional Ethics	01
Total		06

Semester-II

S.No.	Course	Credit hours
1.	General Pharmacology	02
2.	CVS	01
3.	Chemotherapy	03
Total		06

Duration

PhD Program is of two years with four semester's i.e 48 credit hours.

- Each semester is of 06 credit hours.
- Three semesters for course work and one semester for research and thesis

Eligibility Criteria:

- MBBS and MS/ M. Phil with 3.0 CGPA or FCPS/ equivalent degree in relevant discipline from a recognized university/ Institute.
- Shall have to appear in University based test in which qualifying score will be 70% and have to clear the interview.

Semester-III

S.No.	Course	Credit hours
1.	Antineoplastic	01
2.	Endocrine	01
3.	Genetics	02
4.	Miscellaneous	02
Total		06

Semester-IV

S.No.	Course	Credit hours
1.	Research / Thesis writing	30

Total credit hours = 48

PhD (Haematology)

Scheme of Study

Semester – I

S.No.	Code	Course	Credit hours
1.		Genetic	02
2.		Medical Education	01
3.		Research Methodology	02
4.		Professional Ethics	01
		Total	06

Semester – II

S.No.	Code	Course	Credit hours
1.	HAEM-916	Haematopoiesis	01
2.	HAEM-917	Anaemias	02
3.	HAEM-918	Diagnostic Haematology	03
		Total	06

Semester – III

S.No.	Code	Course	Credit hours
1.	HAEM -919	Haematological Malignancies	03
2.	HAEM -920	Disorders of Hemostasis, Blood Transfusion	03
		Total	06

Semester – IV

S.No.	Code	Course	Credit hours
	RES-921	Research / Thesis writing	30

Total credit hours = 48

PhD (Biochemistry)

Scheme of Study

Semester – I

S.No	Code	Course	Credit hours
1.		Genetic	02
2.		Medical Education	01
3.		Research Methodology	02
4.		Professional Ethics	01
		Total	06

Semester – II

S.No	Code	Course	Credit hours
	BCH-924	Advances in Cell Biology	02
	BCH-925	Molecular Biology	03
	BCH-926	Specialized Laboratory Techniques	01
		Total	06

Semester – III

S.No	Code	Course	Credit hours
1.	BCH-927	Clinical Endocrinology	01
2.	BCH-928	Cancer Genetics & Gene Therapy	01
3.	BCH-929	Bio-Informatics – Nanotechnology	02
4.	BCH-930	Clinical Biochemistry	02
		Total	06

Semester – IV

S.No	Code	Course	Credit hours
		Research / Thesis writing	30

Total credit hours = 48

PhD (Chemical Pathology)

Scheme of Study

Semester – I

a. Allied Course 06 Credit Hours

- Genetics 02
- Medical Education 01
- Research Methodology 02
- Professional Ethics 01

Semester – II

Core Course: 06 Credit Hours

S.No	Code	Subjects
1.	CHP-901	Principle of Laboratory Medicine
2.	CHP-902	Advanced Analytical technique
3.	CHP-903	Automation and Point care testing

Semester – III

Optional Course: 06 Credit Hours

(Candidate will take 3 courses relating to his / her PhD research)

S.No	Code	Subjects
1.	CHP-904	Analytical Principles (Molecular biology technique)
2.	CHP-905	Advanced Analytical technique
3.	CHP-903	Advance immune chemical technique
4.	CHP-906	Advance Endocrinology
5.	CHP-907	Research Methodology
6.	CHP-908	Toxicology and therapeutic drug monitoring
7.	CHP-909	Advance Lab Methods: Lab – V
8.	CHP-910	Pediatric chemical chemistry
9.	CHP-911	Laboratory Management
10.	CHP-912	Mass Spectrometry

Semester – IV

S.No	Subject	Credit hours
1.	Research / Thesis writing	30

Candidate has to published One Research paper in HEC recognized Journal and thesis to be evaluated from 2 persons from technologically advanced countries before defense of thesis

Grand Total: 48 Credit Hours



FCPS PART-II TRAINING (MEDICAL)

(Recognized by College of Physician & Surgeons Pakistan)

Highly skilled and vastly experienced faculty conducts these programs. Attachments with stipends are available for Fellowship training. Islamic International Medical College and IIMCT Pakistan Railway Hospital are recognized for Fellowship training in following subjects:

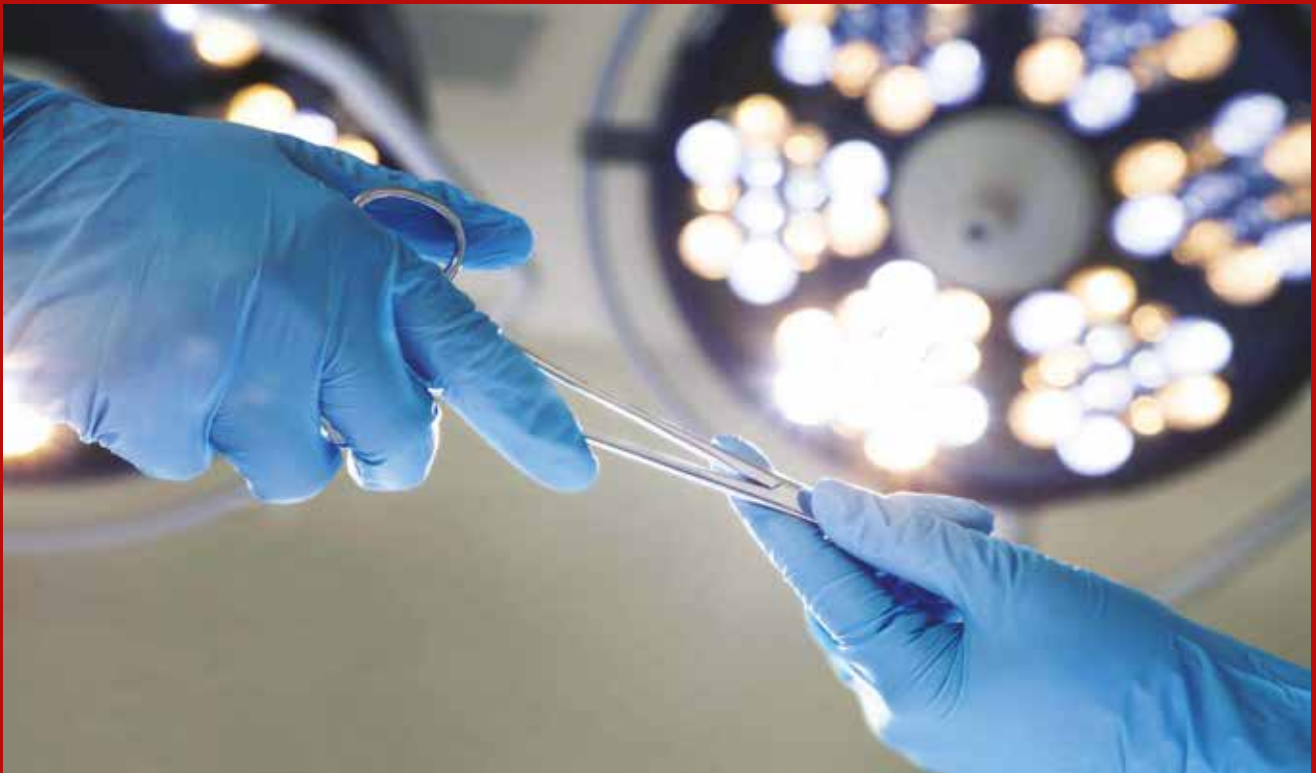
- Physiology
- Medicine
- Surgery
- Pediatrics
- Gynecology and Obstetrics
- Anesthesia
- Prosthodontics



Eligibility Criteria:

- MBBS or equivalent as recognized by PM&DC.
- Fully registered with PM&DC.
- Must have passed FCPS Part-I examination in relevant specialty.
- Must satisfy selection board of the IIMC for postgraduate studies/training.

Note: for more details please visit IIMCT Complex, Al-Mizan, 274-Peshawar Road, Rawalpindi.



FACULTY OF ISLAMIC INTERNATIONAL MEDICAL COLLEGE

Anatomy

Prof. Dr. Rehana Arshad

Professor & HOD
MBBS, M. Phil

Dr. Sikandar Hayat Khan Niazi

Associate Professor
MBBS, FCPS, M. Phil

Dr. Shabana Ali Muhammad

Associate Professor
MBBS, M. Phil

Dr. Huma Beenish

Assistant Professor
MBBS, M. Phil

Dr. Sara Bano

Lecturer/Demonstrator
MBBS, PGT (M. Phil)

Dr. Tooba Khurshid

Lecturer/Demonstrator
MBBS, PGT (M. Phil)

Dr. Nabiha Hussain

Lecturer/Demonstrator
MBBS

Dr. Seemab Hashim

Lecturer/Demonstrator
MBBS

Dr. Ali Ahmed

Lecturer/Demonstrator Anatomy
MBBS, (PGT (M.Phil)

Dr. Sarah Yousuf

Demonstrator Anatomy
MBBS

Physiology

Dr. Shazia Ali

Professor & HOD
MBBS, M. Phil, PhD

Dr. Humaira Fayyaz Khan

Professor
MBBS, FCPS

Dr. Fatima Riaz

Associate Professor
MBBS, M. Phil

Dr. Rabia Azhar

Assistant Professor
MBBS, M. Phil

Dr. Sobia Waqas

Lecturer/Demonstrator
MBBS, PGT (M.Phil)

Dr. Shazadi Ambreen

Lecturer/Demonstrator
MBBS, PGT (M. Phil)

Dr. Abu Bakkar Siddique

Lecturer/Demonstrator
MBBS, PGT (M. Phil)

Dr. M. Ather Abdullah Baig

Demonstrator
MBBS, PGT (M. Phil)

Dr. Fozia Shamshad

Lecturer/Demonstrator Physiology
MBBS, PGT (M.Phil)

Dr. Sana Majeed

Lecturer/Demonstrator Physiology
MBBS, PGT (M.Phil)

Biochemistry

Dr. Amena Rahim

Professor & HOD
MBBS, FCPS, PhD Trainee

Dr. Farhana Ayub

Associate Professor
MBBS, M. Phil, PhD Trainee

Dr. Abeerah Zainab

Lecturer/ Demonstrator
MBBS, PGT (M. Phil)

Dr. Sadaf Ayub

Lecturer/Demonstrator
MBBS, PGT (M. Phil)

Dr. Amna Mahmood

Lecturer/Demonstrator
MBBS

Dr. Muhammad Imran Bajwa

Lecturer/ Demonstrator
MBBS

Dr. Misbah Rahim

Lecturer/Demonstrator
MBBS

Pharmacology

Brig. (Retd) Dr. Akbar Waheed

Professor & HOD
MBBS, M. Phil, Ph. D

Dr. Tahira Inam

Assistant Professor
MBBS, M. Phil

Dr. Jawaria Iftikhar

Lecturer/ Demonstrator
MBBS, PGT (M. Phil)

Dr. Adnan Jehangir Malik

Associate Professor
MBBS, M. Phil

Dr. Rukhsana Munawar

Lecturer/ Demonstrator
MBBS, M. Phil

Dr. Sidra Mumal

Lecturer/ Demonstrator/
MBBS, PGT (M. Phil)

Dr. Uzma Naeem

Associate Professor
MBBS, M. Phil

Dr. Sadia Lodhi

Lecturer/ Demonstrator
MBBS, DA, MCPS (Anesthesiology)
PGT (M. Phil)

Pathology

Col (R)

Prof. Dr. Abdul Bari Khan

Professor (Microbiology) & HOD
MBBS, MCPS, M. Phil

Prof. Dr. Muhammad Nadim Akbar Khan

Professor (Chemical Pathology)
MBBS, MCPS, FCPS, MCPS-HPE

Dr. Shazia Qayyum

Associate Professor
(Chemical Pathology)
MBBS, M. Phil, (PhD Trainee)

Dr. Rubina Shafi

Lecturer/ Demonstrator
MBBS

Dr. Rabia Mubariz

Lecturer/ Demonstrator Pathology
MBBS, PGT (M.Phil)

Maj Gen (R)

Prof. Dr. Suhaib Ahmed

Professor (Hematology)
MBBS, FCPS, PhD

Dr. Samina Iltaf

Professor (Histopathology)
MBBS, MCPS, M. Phil

Dr. Ayesha Nayyar

Associate Professor
MBBS, M. Phil, (PhD Trainee)

Dr. Shazia Taj

Lecturer/ Demonstrator
MBBS

Dr. Ammar-UL-Hassan

Lecturer/ Demonstrator Pathology
MBBS, PGT (M.Phil)

Prof. Dr. Shahina Yasmin

Professor (Microbiology)
MBBS, M. Phil

Dr. Madiha Sajjad Minhas

Professor (Histopathology)
MBBS, FCPS, MHPE

Dr. Uzma Mussarat Malik

Senior Lecturer (Microbiology)
MBBS, MS (Microbiology)
PGT (Microbiology)

Dr. Ayesha Ellahi

Lecturer/ Demonstrator Pathology
MBBS, PGT (M.Phil)

Dr. Ammar Naqi Naqvi

Lecturer/ Demonstrator Pathology
MBBS, PGT (M.Phil)

Forensic Medicine

Dr. Sundus Ambreen

Associate Professor & HOD
MBBS, DMJ

Dr. Tasneem Murad

Assistant Professor
MBBS, DMJ

Dr. Sheeba Shabbir

Lecturer/ Demonstrator
MBBS

Dr. Malik Mohsin Yousaf

Lecturer/ Demonstrator
MBBS

Dr. Saima Tahir

Lecturer/ Demonstrator
MBBS

Dr. Nazia Yasmin

Lecturer/ Demonstrator
MBBS

Community Medicine

Prof. Dr. Muhammed Ayaz Bhatti

Professor & HOD
MBBS, MSC (Public Health), MHPE

Dr. Shahzad Akhtar Aziz

Associate Professor
MBBS, MPH

Dr. Tahira Sadiq

Associate Professor
MBBS, MPH

Dr. Nadia Zohair

Assistant Professor
MBBS, MPH

Dr. Abdul Raafeh Jamal

Lecturer/ Demonstrator
MBBS

Behavioral Sciences

Dr. Fazaila Sabih

Assistant Professor
MSc, M. Phil, PhD

Medicine

Brig (R)

Prof. Dr. Muhammad Farooq

Professor & HOD
MBBS, FCPS

Prof. Dr. Asim Zulfiqar

Professor
MBBS, FCPS

Brig (R) Prof. Shahzad Saeed

Professor
MBBS, FCPS

Dr. Abdul Ghani Waseem

Associate Professor
MBBS, FCPS, MHPE

Dr. Samia Kausar

Assistant Professor
MBBS, FCPS

Dr. Shamaila Burney

Assistant Professor
MBBS, FCPS

Dr. Junaaid Saleem

Assistant Professor
MBBS, FCPS

Dr. Asad Islam

Assistant Professor
MBBS, MRCP, Dip. In Cardiology

Dr. Wajid Ali

Assistant Professor
MBBS, FCPS

Dr. Muhammad Saqib Habib

Senior Registrar
MBBS, FCPS

Dr. Zunera Jahanzeb

Senior Registrar
MBBS, FCPS

Paediatrics

Prof. Dr. Muhammad Tahir

Professor & HOD
MBBS, FCPS

Dr. Bilal Ahmad

Assistant Professor
MBBS, FCPS

Prof. Dr. Gul Hussain

Professor
MBBS, MCPS, FCPS

Dr. Saima Akhtar

Senior Registrar
MBBS, FCPS

Dr. Saba Afzal Sheikh

Assistant Professor
MBBS, FCPS

Surgery

Prof. Dr. Khalid Farooq Danish

Professor & HOD
MBBS, FCPS

Prof. Dr. M. Abdul Zahid

Professor
MBBS, FCPS

Prof. Dr. Afsheen Zafar

Professor
MBBS, FCPS

Dr. Rehan Ahmed Khan

Professor
MBBS, FCPS, FRCS, MHPE

Prof. Dr. Humera Zafar

Professor
MBBS, FCPS, MCPS

Dr. Tausief Fatima

Associate Professor
MBBS, FCPS

Dr. Muhammad Nadeem Umar

Assistant Professor
MBBS, FCPS

Dr. Muhammad Asad

Senior Registrar
MBBS, FCPS

Dr. Umer Javed Chughtai

Senior Registrar Medicine
MBBS, FCPS

ENT

Dr. Nighat Arif

Assistant Professor
MBBS, FCPS

Dr. Sadaf Raffat Mustafa

Assistant Professor
MBBS, FCPS

Gynacelogy/obs

Prof. Dr. Fareesa Waqar

Professor & HOD
MBBS, FCPS

Dr. Saadia Sultana

Professor
MBBS, MCPS, FCPS, MCPS-HPE

Dr. Shamaila Sharif

Assistant Professor
MBBS, FCPS, MHPE

Dr. Rubina Javed

Assistant Professor
MBBS, FCPS

Dr. Wajiha Shadab

Assistant Professor
MBBS, FCPS

Dr. Munazza Ruby

Assistant Professor
MBBS, MRCOG (UK)

Dr. Beenish Riaz

Assistant Professor
MBBS, FCPS

Dr. Rakhshanda Aslam

Senior Registrar Gynecology/ Obs
MBBS; FCPS

Ophthalmology

Prof. Dr. Aneeq Ullah Baig Mirza

Professor & HOD
MBBS, FCPS

Dr. Sohail Zia

Associate Professor
MBBS, MCPS, FCPS

Dr. Muhammad Usman Arshad

Senior Registrar
MBBS, FCPS

Anesthesiology

Brig (R) Prof. Dr. Shafaq Ahmed

Professor / HOD Anesthesiology
MBBS, FFARCS

Prof. Dr. Hana Khurshid

Professor Anesthesiology
MBBS, MCPS, FCPS

Dr. Muhammad Nazir Awan

Assistant Professor Anesthesiology
MBBS, DA, FCPS, MSc (Pain
Medicine)

Orthopedics

Prof. Dr. Sohail Iqbal Sheikh

Professor & HOD
MBBS, M.S. (Ortho), Dip. in
Orthopedics

Dr. Syed Sajid Hussain

Associate Professor
MBBS, FCPS

Dr. Raja Adnan Ashraf

Senior Registrar
MBBS, FCPS

Radiology

Dr. Ahsen Farooq

Assistant Professor & HOD
MBBS, FCPS

Dr. Ehsan Masud Kiani

Assistant Professor
MBBS, MCPS, FCPS

Dr. Tasneem Fatima Ahmad

Senior Registrar
MBBS, MCPS

Dr. Fazeela Farid

Senior Registrar
MBBS, MCPS

Psychiatry

Dr. Muhammad Masood Khokhar

Associate Professor & HOD
MBBS, FCPS, MCPS

Dr. Ather Muneer

Assistant Professor
MBBS, MCPS, FCPS

Dermatology

Dr. Lubna Rani

Assistant Professor & HOD
MBBS, FCPS

Medical Education

Dr. Raheela Yasmin

Associate Professor &
Associate Director Education (RARE)
BDS, DHPE, MHPE

ISLAMIC INTERNATIONAL DENTAL COLLEGE (IIDC)

Islamic International Dental College (IIDC) was established in 2001 and is affiliated with Riphah International University Islamabad.

The college is recognized by Pakistan Medical and Dental Council. It offers 4 years degree program of BDS (Bachelor of Dental Surgery). In addition to the undergraduate course, IIDC offers postgraduate courses in departments of Orthodontics, Operative Dentistry, Oral & Maxillofacial Surgery and Prosthodontics accredited by College of Physicians and Surgeons Pakistan. IIDC also offers MDS program in Orthodontics, Operative Dentistry and M.Phil Dental Material recognized by HEC and PM&DC.

IIDC has always placed strong emphasis on clinical and teaching excellence. It also stresses on the importance of basic and clinical research and offers opportunities and facilities for training in a variety of disciplines relevant to the biological, material, clinical and Epidemiological sciences.

Accreditation:

- IIDC is recognized by PM&DC for 75 students in BDS annually.
- Fourteen batches of IIDC have already been graduated and are registered with PM&DC.
- Islamic International College Dental Hospital (IIDH) is recognized for house job for its own graduates.
- It is recognized for training by the College of Physicians and Surgeons, Pakistan for FCPS Part-II in Orthodontics, Operative Dentistry, OMFS (Oral & Maxillofacial Surgery) and Prosthodontics.



-LEADER



Prof. Dr. Ulfat Bashir

Principal IIDC
BDS , MCPS , FCPS, MHPE

Prof. Dr. Ulfat Bashir received his BDS degree in 1994 from de'Montmorency College of Dentistry, Lahore (University of Punjab). He did MCPS (Orthodontics) in 2000 & later completed his FCPS (Orthodontics) in 2002 from College of Physicians & Surgeons, Pakistan.

He has vast experience in the field of academics, curriculum development and hospital services. And recently qualified masters in Health Professional Education from Riphah. He has produced a number of specialists/consultants in the field of Orthodontics. He is an author of many national & international publications.

He is the member of different professional and social societies. He has attended and presented at many national & international conferences. Presently he is the Editor in chief of Pakistan Orthodontic Journal, President Pakistan Association of Orthodontists and Vice President Federal zone for Pakistan Dental Association.

Recently, Prof. Dr. Ulfat Bashir has been nominated and awarded "The Best Teacher 2013" award by Higher Education Commission (HEC).

BACHELORS OF DENTAL SURGERY (BDS)

Islamic International Dental College is offering undergraduate four years degree program, Bachelor of Dental Surgery (BDS), followed by one year house job.

First batch of BDS students graduated in 2005 and till now 14 batches have been graduated. Our students are working nationally and all around the globe. In the beginning college started as part of medical college at Almizan Building, 274- Peshawar Road, Rawalpindi, and now it is located in its exclusive building at 7th Avenue, G-7/4, Islamabad, apart from being a fully equipped 125 dental chairs hospital.

Eligibility Criteria:

The candidate should have passed the intermediate science (FSc) examination (medical group) securing at least 60% marks in aggregate, unadjusted, from a Pakistani university or an equivalent examination of a board of secondary education in Pakistan.

OR

Any other examination of a foreign university or examining body (A levels etc.) which in scope and standard is found equivalent to the intermediate science F.Sc (Pre Medical Group) examination (medical group) of a Pakistani university or board of secondary education. Such candidates will have to furnish, along with their application, an equivalence certificate from the inter-board chairman of committee (IBCC). However, equivalence certificates of such applicants will not be accepted who have not studied physics, chemistry, biology and English in 11th and 12th grade.

OR

The candidate should have passed a higher examination of a Pakistani university with biological sciences (B.Sc) after F.Sc in medical group, securing 60% marks (in both degrees) in aggregate, unadjusted, from a Pakistani university or an equivalent examination.

Admission Policy

The admission policy is subject to the guidelines provided by PM&DC or Ministry of Health from time to time.

Admission for expatriates / International Students

Pakistani nationals living abroad who meet the eligibility criteria mentioned above are eligible to take the entry test. If they do not take the entry test, they can alternatively take the SAT II test with minimum score of 550.

If the medium of instruction in that country is other than English, they will also have to take TOEFL with a minimum score of 500 or IELTS with a minimum score of 5.5.

They are eligible for both open merit seats and the reserved seats for expatriates. However entry test is mandatory for admission on open merit seat.

Note: For International students (Non Pakistanis) more documentation shall be required which is provided on our website. www.riphah.edu.pk



**Duration:**

4 years

Available Seats:

The seats available are as follows:

Open Merit	64 seats
Foreign / Expatriate	10 seats
Total	75 seats

Selection Criteria:

Matric or Equivalent	10%
Intermediate or Equivalent	40%
Provincial Govt. Entry Test	50%

Class Timings:**Monday to Friday**

(8:00 am to 3:00 pm)

College Location:

G-7/4 Campus, Islamabad.

Affiliated Hospitals:

Islamic International Dental Hospital
G-7/4, Islamabad.

Pakistan Railway General Hospital
Westridge, Rawalpindi.

Riphah International Hospital
Sihala, Zone V, Islamabad.

MDS ORTHODONTICS

The orthodontic postgraduate program at Riphah International University provides a combined clinical experience in orthodontics with a critical thinking and research experience that leads to a Master of Dental Surgery conferred by Riphah International University. Students in the advanced orthodontic education program are required to demonstrate clinical and professional proficiency as well as complete the didactic and research components of the MDS degree prior to graduation.

Program Description:

The Department of Orthodontics offers a 4 years, 93 Credit Hours program. Our full-time and adjunct attending faculty provide instruction in the latest and quite diverse approaches to clinical care and supervise treatment of a wide variety of orthodontic patients, including patients with complex craniofacial or developmental skeletal disharmony problems. The postgraduate program is designed to develop skilled practitioners who understand and are familiar with contemporary techniques and who can critically

and scientifically evaluate clinical challenges and innovative treatment approaches in the future.

The curriculum is composed of seminars and small-group instruction with emphasis on critical thinking and problem solving. Contemporary concepts of orthodontic treatment are reviewed for substantive and scientific content, in which students participate in regularly scheduled orthognathic surgery, craniofacial, and interdisciplinary conferences. It also include an extensive practice management seminar series. The successful completion of a research project and defense of a thesis is required for the receipt of the MDS Degree.

Class Timings: Monday to Saturday
(8:00 am to 2:00 pm)

Eligibility Criteria:

BDS, degree or its equivalent in the relevant discipline from PMDC & HEC recognized University and Institution.

Scheme of Study

Semester-I

Course	Course Name	Credits
MDOR 7112	Basic Orthodontic Technique and Cephalometrics	2
MDOR 7121	Head and Neck Anatomy and Microbiology	1
MDOR 7131	Inflammation and Immunology	1
MDOR 7142	Growth and Development	2
MDOR 7152	Development of the Dentition	2
MDOR 7162	Journal Club and Academic Presentations	2
MDOR 7172	Clinical Interactive Practice	2
	Total	12

Semester-II

Course	Course Name	Credits
MDOR 7212	Etiology and Epidemiology of Malocclusion	2
MDOR 7222	Edgewise Typodont Course	2
MDOR 7231	Communication Skills and Patient Management	1
MDOR 7241	Computer Skills	1
MDOR 7251	Orthodontic Laboratory Technique	1
MDOR 7261	Orthodontic Records	1
MDOR 7272	Journal Club and Academic Presentations	2
MDOR 7282	Clinical Interactive Practice	2
	Total	12

Semester-III

Course	Course Name	Credits
MDOR 7311	Biomedical Imaging	1
MDOR 7322	Functional Appliances	2
MDOR 7332	Biostatistics, Research Methodology and Thesis Writing	2
MDOR 7341	History of Orthodontics and Development of appliances	1
MDOR 7352	Fixed Appliances in Orthodontics	2
MDOR 7362	Medical Education	2
MDOR 7372	Journal Club and Academic Presentations	2
MDOR 7382	Clinical Interactive Practice	2
	Total	14

Semester-IV

Course	Course Name	Credits
MDOR 7412	Biomechanics	2
MDOR 7421	Occlusion and Preventive/Interceptive Orthodontics	1
MDOR 7432	Orthodontic Diagnosis and Treatment Planning	2
MDOR 7441	Practice Management and Clinical Governance	1
MDOR 7451	Temporomandibular Joint Dysfunction	1
MDOR 7461	Interdisciplinary Case Conferences	1
MDOR 7472	Journal Club and Academic Presentations	2
MDOR 7482	Clinical Interactive Practice	2
	Total	12

Semester-V

Course	Course Name	Credits
MDOR 7512	Adult Orthodontics	2
MDOR 7522	Orthodontic Materials	2
MDOR 7531	Microimplants in Orthodontics	1
MDOR 7541	Oro-Pharyngeal Function and Management of Obstructive Sleep Apnea	1
MDOR 7552	Journal Club and Academic Presentations	2
MDOR 7562	Clinical Interactive Practice	2
	Total	10

Semester-VI

Course	Course Name	Credits
MDOR 7611	Periodontic Orthodontic Relationships	1
MDOR 7621	Management of Impacted and Missing Teeth	1
MDOR 7631	Stability, Retention and Relapse	1
MDOR 7641	Clear Aligner Therapy and Tissue Reactions in Orthodontics	1
MDOR 7672	ABO Case Reports	2
MDOR 7682	Clinical Interactive Practice	2
MDOR 7692	Journal Club and Academic Presentations	2
	Total	10

Semester-VII

Course	Course Name	Credits
MDOR 7712	Management of Complex Orofacial Deformities	2
MDOR 7721	Iatrogenic Effects of Orthodontics	1
MDOR 7732	Professional Ethics and Regulations	2
MDOR 7741	Genetics and Orthodontics	1
MDOR 7752	Thesis	2
MDOR 7762	Clinical Interactive Practice	2
MDOR 7772	Journal Club and Academic Presentations	2
	Total	12

Semester-VIII

Course	Course Name	Credits
MDOR 7811	Psychological Aspects of Orthodontics	1
MDOR 7821	Interdisciplinary Case Conferences (Endodontics and surgery)	1
MDOR 7831	Interdisciplinary Case Conferences (with Periodontics and Prosthodontics)	1
MDOR 7752	Thesis	4
MDOR 7842	Clinical Interactive Practice	2
MDOR 7852	Journal Club and Academic Presentations	2
	Total	11



MDS OPERATIVE DENTISTRY

The operative dentistry postgraduate program at Riphah International University offers an educational experience which combines the theoretical and the clinical practice. It is primarily a research-oriented degree which seeks to explore improved methods of patient care in restoration dentistry. Students selected for the program receive training in research methods and evidence based restorative dentistry.

Program Description:

The Department of Operative dentistry offers a 4 years, 96 credit hours program. The full-time and adjunct attending faculty provide instruction in the latest and quite diverse approaches to clinical care and supervise treatment of operative dentistry patients, patients requiring a wide variety of complex restorative and endodontic treatments. The postgraduate program is designed to develop skilled practitioners who understand and are familiar with contemporary techniques and who can critically and scientifically evaluate clinical challenges and innovative treatment approaches in the future.

The curriculum is composed of seminars and small-group instruction with emphasis on critical thinking and problem solving. Contemporary concepts of operative dentistry treatment are reviewed for substantive and scientific content and students participate in regularly scheduled operative dentistry surgery and interdisciplinary conferences. Also included is an extensive practice management seminar series. The successful completion of a research project and defense of a thesis is required for the receipt of the MDS Degree.

Class Timings: Monday to Saturday
(8:00 am to 2:00 pm)

Eligibility Criteria:

BDS, degree or its equivalent in the relevant discipline from PMDC & HEC recognized University and Institution.



Semester-I

Code	Course Name	Cr. Hours
MDOP7111	Pulp & periapex	1
MDOP7122	Diagnosis & Treatment planning	2
MDOP7131	Preliminary Considerations	1
MDOP7142	Caries I	2
MDOP7151	Bonding	1
MDOP7161	Pain control	1
MDOP7172	Journal Club and Academic Presentations 1	2
MDOP7182	Clinical Interactive practice 1	2
	Total	12

Semester-II

Code	Course Name	Cr. Hours
MDOP7211	Caries II	1
MDOP7222	Direct restorations & Restorative materials	2
MDOP7232	Orthograde endodontics	2
MDOP7242	Dental Radiology	2
MDOP7251	Communication skills & Record Keeping	1
MDOP7262	Journal Club and Academic Presentations 2	2
MDOP7272	Clinical Interactive practice 2	2
	Total	12

Semester-III

Code	Course Name	Cr. Hours
MDOP7311	Indirect restorations	1
MDOP7321	Biostatistics & thesis writing	1
MDOP7332	Medical education & research methodology	2
MDOP7341	Pulpal considerations	1
MDOP7351	Complex amalgam restorations & Restoration of endodontically treated teeth	1
MDOP7361	Management of endodontic emergencies	1
MDOP7371	Non-odontogenic lesions	1
MDOP7382	Journal Club and Academic Presentations 3	2
MDOP7392	Clinical Interactive practice 3	2
	Total	12

Semester-IV

Code	Course Name	Cr. Hours
MDOP7412	Occlusion & Tooth wear	2
MDOP7421	Dental Implant 1	1
MDOP7431	Dental Anomalies	1
MDOP7441	Dental Esthetics	1
MDOP7452	Medical Emergencies & Disabilities	2
MDOP7461	Paediatric endodontics and Vital Pulp Therapy	1
MDOP7472	Journal Club and Academic Presentations 4	2
MDOP7482	Clinical Interactive practice 4	2
	Total	12

Semester-V

Code	Course Name	Cr. Hours
MDOP7511	Dental Implant 2	1
MDOP7522	Evaluation of outcomes and periradicular surgery	2
MDOP7532	Tooth discolouration & treatment	2
MDOP7542	Trauma and root resorption	2
MDOP7551	Endo-perio lesions, Cracks & Fractures	1
MDOP7562	Journal Club and Academic Presentations 5	2
MDOP7572	Clinical Interactive practice 5	2
	Total	12

Semester-VI

Code	Course Name	Cr. Hours
MDOP7611	Dental Implant 3	1
MDOP7622	Retreatment and Iatrogenic injuries	2
MDOP7631	Regenerative endodontics	1
MDOP7642	Fixed Prosthodontics 1	2
MDOP7652	Periodontal considerations 1	2
MDOP7662	Journal Club and Academic Presentations 6	2
MDOP7672	Clinical Interactive practice 6	2
	Total	12

Semester-VII

Code	Course Name	Cr. Hours
MDOP7712	Fixed Prosthodontics 2	2
MDOP7722	Periodontal considerations 2	2
MDOP7732	Professional Ethics & Regulations	2
MDOP7744	Thesis writing	4
MDOP7752	Journal Club and Academic Presentations 7	2
MDOP7762	Clinical Interactive practice 7	2
	Total	14

Semester-VIII

Code	Course Name	Cr. Hours
MDOP7818	Thesis writing	8
MDOP7821	Advanced Rotary Endodontics	1
MDOP7831	Endodontic Practice Management	1
MDOP7842	Journal Club and Academic Presentations 8	2
MDOP7852	Clinical Interactive practice 8	2
	Total	15



M. PHIL DENTAL MATERIALS

This program is designed to prepare specialists in the field of dental materials, which will improve the teaching faculty in basic sciences of dentistry.

This course will cover comprehensively the understanding of all materials used in dentistry, along with the knowledge related to the field of Biomaterials. The course will also cover topics pertaining to the general properties and characterization of materials. Research methodology, Biostatistics and paper writing are also included as compulsory modules of this course.

The objective of this course is to broaden the knowledge of dentists in the field of dental materials, involving comprehensive detail of material characterization and properties, composition, clinical handling and all possible variables involving the way they interact with the environment in which they are placed.

Program Description:

The program is of 2 years in duration with a total of 32 credit hours. There would be a total of 4 semesters each carrying 8 credit hours. One credit hour equates to 15 hours of contact sessions. Hence a 4 credit hour module/course would have 60 hours of seat time, judiciously recorded in the graduate student log books.

Class Timings: Monday to Friday
(8:00 am to 3:00 pm)

Eligibility Criteria:

To be eligible for admission to M. Phil, a candidate having BDS, degree or its equivalent in the relevant discipline from PMDC & HEC recognized University and Institution.

Duration of Course:

The minimum duration of M.Phil (Science of Dental Materials) course is two years. The duration of course can further be increased by the Board of Studies of Dentistry. The course is divided into two phases;

The phase-I and phase-II are spread over one year each. The Phase-I & II are separated by intermediate evaluation.

Admission Criteria

- B.D.S.
- One year house job
- Recommendation of the Supervisor / Entry Test.
- Credit for marks in Professional Examinations, additional experience and Published Research.





FCPS PART-II TRAINING (DENTISTRY)

Attachments with stipends are available for Fellowship Training in Islamic International Dental College and Hospital (IIDC-H)) in the following specialities.

- Orthodontics
- Operative Dentistry & Endodontics
- Oral & Maxillofacial Surgery
- Prosthodontics

FACULTY OF ISLAMIC INTERNATIONAL DENTAL COLLEGE

DEPARTMENT OF ORTHODONTICS

Prof. Dr. Ulfat Bashir

Professor / Supervisor / Principal
BDS, MCPS, FCPS, MHPE

Dr. Owais Khalid

Associate Professor / HOD
BDS, FCPS, MOrth RCSEd, FFDRCSI

Dr. Kanwal Zulfiqar

Assistant Professor
BDS, FCPS

Dr. Seem Zahid

Associate Professor
BDS, FCPS

DEPARTMENT OF PERIODONTOLOGY

Dr. Sobia Bostan

Senior Registrar
BDS, FCPS

Dr. Anam Zahid

Registrar
BDS, MSc

DEPARTMENT OF PROSTHODONTICS

Dr. Salman Ahmad

Associate Professor / HOD
BDS, FCPS

Dr. Aamir Ghafoor

Assistant Professor
BDS, FCPS

DEPARTMENT OF ORAL & MAXILLOFACIAL SURGERY

Dr. Kamran Khan

Associate Professor / HOD
BDS, MFDS, FFDRCS

Dr. Mohsin Fazal

Assistant Professor
BDS, FCPS

Dr. Zeshan Khattak

Assistant Professor
BDS, MSc, MFDS, FICOI, FFD, RCSI

DEPARTMENT OF OPERATIVE DENTISTRY

Dr. Alia Ahmed

Professor / HOD
BDS, FCPS

Dr. Muhammad Qasim Javed

Assistant Professor
BDS, FCPS,
MSc (Healthcare Program)

Dr. Muhammad

Assistant Professor
BDS, FCPS

DEPARTMENT OF COMMUNITY DENTISTRY

Dr. Muhammad Humza Bin Saeed

Assistant Professor / Incharge
BDS, MSc

Dr. Faisal Shafiq Malik

Assistant Professor
BDS, MPH

DEPARTMENT OF DENTAL MATERIALS

Dr. Yawar Hayat Khan

Professor / HOD
BDS, MSc (Dental Material)
MSc (Health Professional
Education)

Dr. Faisal Moeen

Associate Professor
BDS, MSc

Dr. Saleha Nisar

Assistant Professor
BDS, M. Phil

Dr. Uzma Hasan

Assistant Professor
BDS, M. Phil

DEPARTMENT OF ORAL PATHOLOGY

Dr. Nadia Zaib

Associate Professor / Incharge
BDS, M.Phil

Dr. Rabia Masood

Assistant Professor
BDS, M. Phil

DEPARTMENT OF ORAL BIOLOGY

Dr. Shakeel Kazmi

Assistant Professor / Incharge
BDS, MSc

Dr. Saqlain Bin Syed

Assistant Professor
BDS, MSc

DEPARTMENT OF ORAL MEDICINE

Dr. Amber Kiyani

Assistant Professor / Incharge
Diplomate of American Board of
Oral and Maxillofacial Pathology
BDS, MSc

MEDICAL

Health Care
Doctor
Hospital
Pharmacist
Nurse
Dentist
First Aid
Surgeon
Emergency



Health Care
Doctor
Hospital
Pharmacist
Nurse
Dentist
First Aid
Surgeon
Emergency





TEACHING HOSPITALS

“LEARN BY DOING”

For clinical and practical training four hospitals are affiliated with the College. These are:

- IIMCT Pakistan Railways Hospital, Rawalpindi, administered since 1998. 350 bed tertiary care hospital.
- Riphah International Hospital, established 2014. 167 bed tertiary care hospital.
- Islamic International Dental Hospital, Islamabad, established since 2001. 118 Dental Chairs in different dental specialties.
- Hearts International Hospital, Rawalpindi, established since 1996. 105 bed hospital for delivering high-tech care in cardiology, pulmonology, gastroenterology and many other areas.

IIMCT PAKISTAN RAILWAYS GENERAL HOSPITAL

It is a unique collaboration of private-public sector partnership in health sector. Under this collaboration, IIMCT has been given full control of Railways Hospital for 66 years. IIMCT provided faculty, staff and high tech equipment to transform this hospital into 350 bed teaching hospital. All major departments i.e. Medicine, Surgery, Gynecology & Obstetrics, Pediatrics and Anesthesia are recognized for FCPS training by College of Physicians and Surgeons Pakistan.

This hospital is a true general hospital for railway employees and general public of the area. This provides rich teaching material for both undergraduate and postgraduate students. To meet the academic needs two lecture theaters and thirteen demonstration rooms were added to the hospital. IIMCT provides completely free health services to Railways beneficiary. It is the only general hospital with department of Physiotherapy and Rehabilitation which is fully equipped and staffed.

The affiliation of PRH with IIMCT has benefited Railway patients by providing better healthcare delivery, but it has also resulted in marked financial relief to Railway in terms of saving of expenditures which would have cost millions of rupees to Railway for providing such healthcare services.



RIPHAH INTERNATIONAL HOSPITAL

The Riphah International Hospital is located on the main Islamabad Expressway about 1 kilometer from KAK PUL (Bridge), opposite to DHA Phase-II Islamabad.

The hospital comprises of male & female medical wards, children, medical ward, consultants OPD block, general OPD block, male & female emergency, dental department, lab and diagnostic department, male & female Surgical blocks, Gynae and Paeds surgical block. First floor consists of ICU, labor & delivery, NICU, three operating rooms, main recovery, male & female prayer areas and coffee shop.

The total covered area of the hospital is 45000 SQF. The scope of services (Phase-I, started Jan, 2014) was OPD consultations (Gynae Obs, Medicine, Surgery, Paeds, Eye/ENT and Dermatology). Emergency / Ambulatory care services, OT, Labour, ICU, NICU and in patient services, routine Pharmacy services, Basic lab, Blood bank and diagnostic services and free medical camps to the surrounding community through Riphah Social Welfare Department. For invasive diagnostics and major procedures and admission patients are referred to IIMCT Pakistan Railway Hospital.



ISLAMIC INTERNATIONAL DENTAL COLLEGE/HOSPITAL

Islamic International Dental College/Hospital (Teaching Hospital of Islamic International Dental College) was established in 2001, in start hospital started with 35 dental chairs but with passage of time, we expanded our facilities and services, and with the Grace of Allah Almighty, Islamic International Dental College - Hospital has been counted in the largest dental hospitals of Pakistan, now IIDC-H has 118 dental chairs distributed in different dental specialties, digital Imaging system, State of the art Porcelain and ceramic labs and Executive Dental clinics.

Services has been provided in following dental specialties:

- Operative / Conservative Dentistry
- Prosthodontics
- Orthodontics
- Periodontology
- Oral & Maxillofacial Surgery

On average 180 patients are being treated daily in safe environment, special care / efforts has been given to waste management / sterilization, such as well established state of the art sterilization room where each and every instrument is being washed and packed in pouches, different color dustbins for the waste management, well known branded hand sanitizers installed in clinical areas.



HEARTS INTERNATIONAL HOSPITAL

Hearts International Hospital is a general hospital which provides medical services to their patients. It is located in Rawalpindi, Pakistan. It provides sustained standards in field of medicine and surgery.

It is equipped with best medical technology and contains all types of departments for health and care. It prides itself in undertaking neurosurgery, cardiac surgery invasive radiology and in all other health care delivery including MCH, Medicine and surgery.

Hearts International Hospital has highly experienced trained and extremely competent specialist in general surgery, cardiac surgery, neurosurgery, medicine, oncology, nephrology, pulmonology, paediatrics and gynecology.



DRESS CODE

Following dress code must be strictly observed. Students violating the dress code will be fined, marked absent and may even be referred to the Proctorial Board for more severe punishment.

Summer

Male:

- White shirt with full sleeves and collar with front pocket
- Steel grey dress pant
- Maroon Neck Tie
- Black Shoes (Oxford)
- Black Socks

Female:

- White band collar qamees with full sleeves no slits. Qamees length should extend 2 inches below the knees.
- Black closed shoes
- Black socks
- Maroon scarf of specified size to fully cover the head, neck and body.
- Swan white shalwar In addition to this, girls can wear Abaya that may be white/black.
- Maroon band collar qamees from 3rd Year onwards.

Winter:

Both male and female students should wear maroon Sweater and /or maroon single breast blazer.

White Coat:

Both male and female should wear white coat. It should be:

- Stitched loosely
- 2 inches extended below the knee
- Three buttons, two side pockets and one chest pocket on the left.

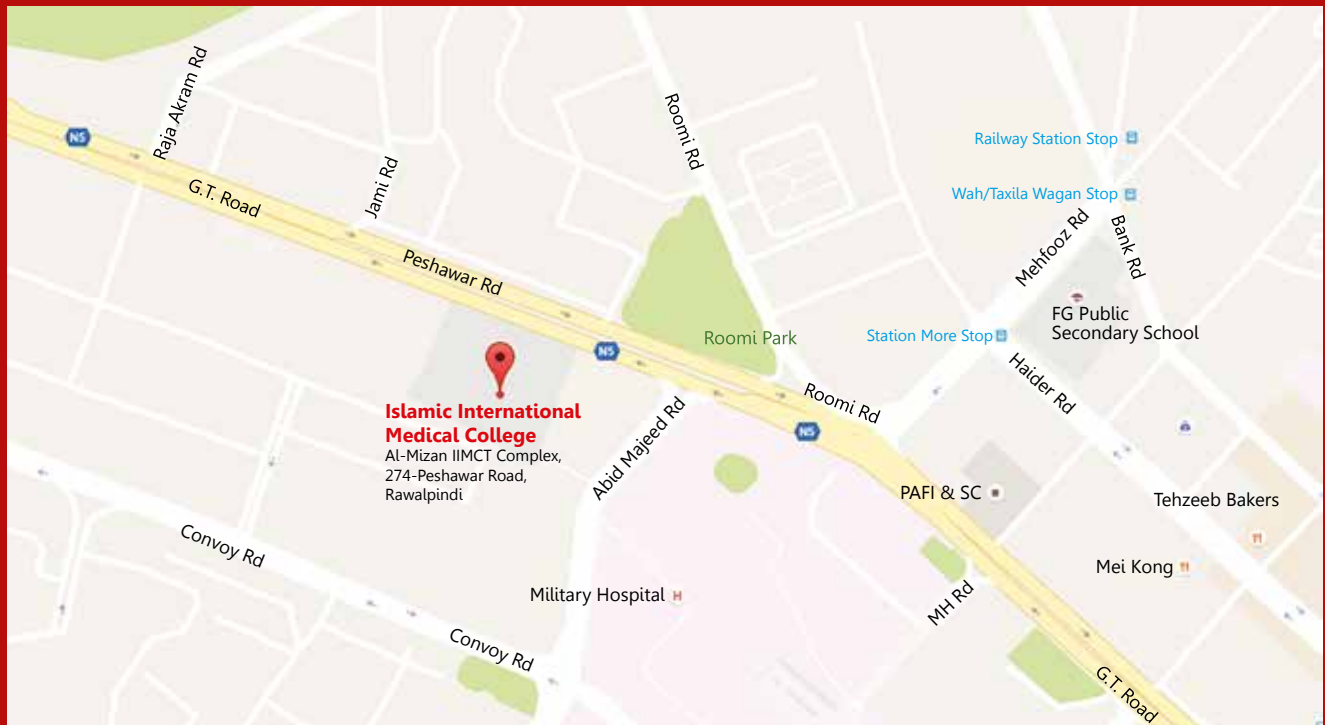
Note:

- The head scarf is mandatory for female students and it should cover their head, hair, neck and figure properly.
- Female students should wear full sleeve shirts without slits in sleeves
- Any color, other than the color prescribed for qamees, scarf, shirts, trousers, tie, footwear socks etc. is not allowed.
- Tight fitting, V-neck, fancy or trendy shalwars, embroidery or any other ornamental work is strictly forbidden.
- Baggy pants, jeans, tights, jackets and joggers are not allowed.

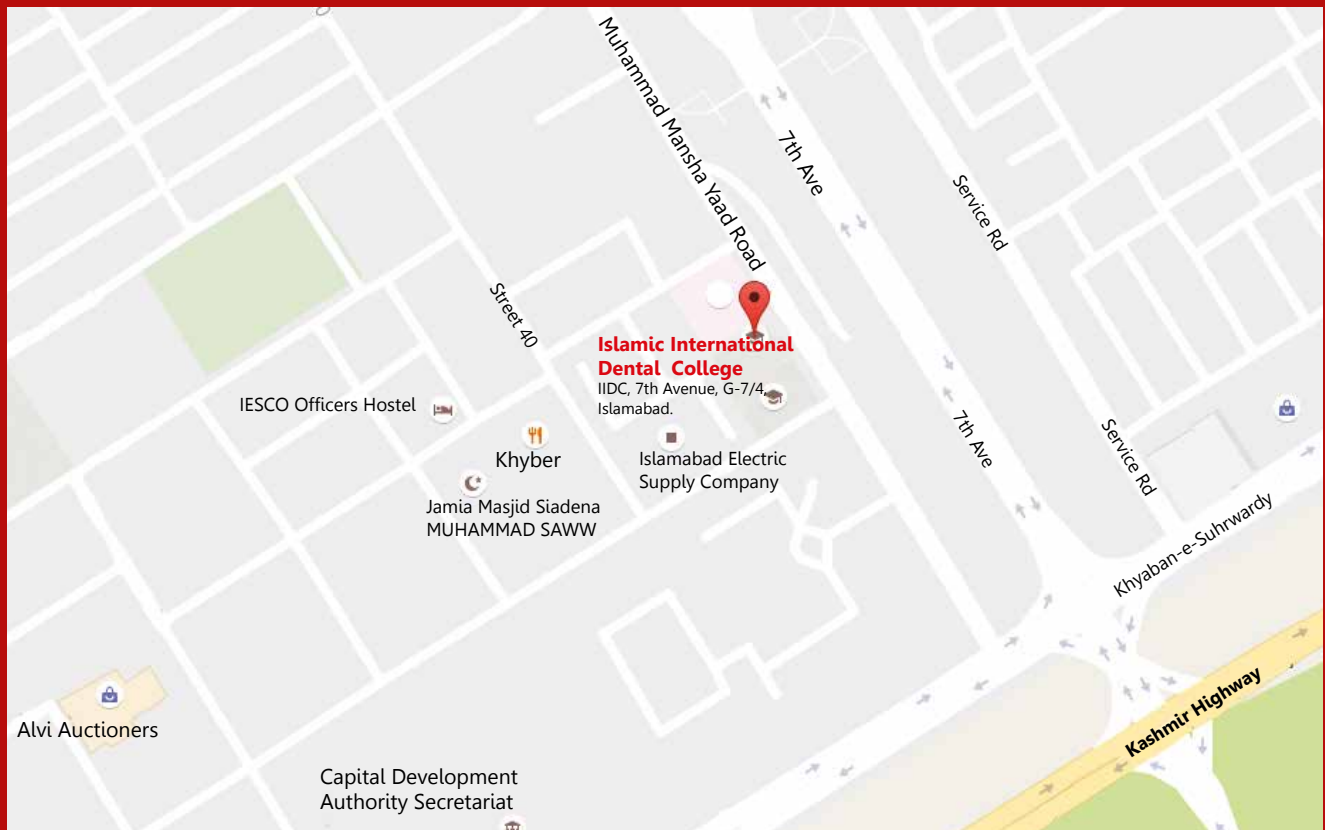


Location Map

Al-Mizan Campus, Rawalpindi



Islamabad City Campus-I



ISLAMABAD / RAWALPINDI

Rawalpindi Campus:

Al-Mizan IIMCT Complex,
274-Peshawar Road, Rawalpindi.

UAN: +92 (51) 111-510-510

Phone: +92 (51) 512 5162-7

I-14 Campus:

Sector I-14, Haji Camp, Islamabad.

Phone: +92 (51) 844 6000-7

UAN: +92 (51) -111-747-424

Islamabad City Campus-I:

RIU, 7th Avenue, G-7/4, Islamabad.

Phone: +92 (51) 289 1835-8

Fax: +92 (51) 289 0690

Islamabad City Campus-II:

Ground Floor, 4-Evacuee Trust Complex,
Agha Khan Road, Near Marriott Hotel,
F-5, Islamabad.

Phone: +92 (51) 843 8370-7

RIPHAH WISH Campus Islamabad:

Street No. 5, Faiz Ahmed Faiz Road,
H-8/2, Islamabad.

Phone: +92 (51) 492 2161-5

IIMCT Pakistan Railway Hospital:

Westridge, Rawalpindi.

Phone: +92 (51) 425 9795-8

Fax: +92 (51) 425 9793

Riphah International Hospital:

Main Expressway opposite DHA II,
Sihala, Islamabad.

Phone: +92 (51) 448 6064

Islamic International Dental Hospital:

IIDH, 7th Avenue, G-7/4, Islamabad.

Phone: +92 (51) 289 1835-8

Fax: +92 (51) 289 0690

Hearts International Hospital:

192-A The Mall Road, Rawalpindi,

Phone: +92 (51) 551 0888, 551 0999

Fax: +92 (51) 558 0711

LAHORE

Township Campus:

14-Civic Center, Near Hamdard
Chowk, Township, Lahore.

Phone: +92 (42) 351 26110-8

Raiwind Campus:

Raiwind Road Campus,
12-Km, Raiwind Road, Lahore.

Phone: +92 (42) 111- 747-424

Quaid-e-Azam Campus

28-M, Quaid-e-Azam, Industrial
Estate, Kot Lakhpat, Lahore.

UAN: +92 (42) -111-747-424

FAISALABAD

Faisalabad Campus:

Satiana Road, Adjacent Fish Farm,
Faisalabad.

Phone: +92 (41) 8777- 210 & 310

UAE

UAE Campus:

RAK College of Dental Sciences,
PO Box 12973, Ras Al Khaimah, UAE

Phone: +97 (17) 222 2593

Fax: +97 (17) 222 2634



facebook.com/RiphahUniversity

www.riphah.edu.pk

